

DEPARTMENT OF THE ARMY TECHNICAL MANUAL

**ORGANIZATIONAL MAINTENANCE REPAIR PARTS
AND SPECIAL TOOLS LISTS
PREAMPLIFIER AM-3148/USM
FSN 6625-875-1058**

**Headquarters, Department of the Army, Washington, DC
29 November 1974**

Current as of 27 September 1974

	Paragraph	Page
SECTION I INTRODUCTION		
Scope	1-1	2
General	1-2	2
Explanation of columns	1-3	2
Special information	1-4	4
Location of repair parts	1-5	4
Abbreviations (Not applicable)	1-6	4
Reporting of equipment publication improvements	1-7	4
II. PRESCRIBED LOAD ALLOWANCE (Not applicable)		6
III. REPAIR PARTS LIST		
IV. SPECIAL TOOLS, TESTS AND SUPPORT EQUIPMENT (Not applicable)		
V. INDEX - FEDERAL STOCK NUMBER AND REFERENCE NUMBER CROSS REFERENCE TO FIGURE AND ITEM NUMBER		7

* This manual supersedes TM 11-6625-488-20P, 26 June 1963.

SECTION I INTRODUCTION

1.1 Scope

This manual is a guide to the classification of support items. It sets out the principles and procedures for the classification of support items. It is intended for use by the user of the MRS, and the user of the MRS, and the user of the MRS.

1.2 General

The classification of support items is a complex task. It is a task which requires a knowledge of the equipment, the equipment's maintenance requirements, and the equipment's support requirements.

The classification of support items is a task which requires a knowledge of the equipment, the equipment's maintenance requirements, and the equipment's support requirements.

The classification of support items is a task which requires a knowledge of the equipment, the equipment's maintenance requirements, and the equipment's support requirements.

The classification of support items is a task which requires a knowledge of the equipment, the equipment's maintenance requirements, and the equipment's support requirements.

The classification of support items is a task which requires a knowledge of the equipment, the equipment's maintenance requirements, and the equipment's support requirements.

The classification of support items is a task which requires a knowledge of the equipment, the equipment's maintenance requirements, and the equipment's support requirements.

The classification of support items is a task which requires a knowledge of the equipment, the equipment's maintenance requirements, and the equipment's support requirements.

The classification of support items is a task which requires a knowledge of the equipment, the equipment's maintenance requirements, and the equipment's support requirements.

The classification of support items is a task which requires a knowledge of the equipment, the equipment's maintenance requirements, and the equipment's support requirements.

1.3 Explanation of Columns

The classification of support items is a task which requires a knowledge of the equipment, the equipment's maintenance requirements, and the equipment's support requirements.

The classification of support items is a task which requires a knowledge of the equipment, the equipment's maintenance requirements, and the equipment's support requirements.

The classification of support items is a task which requires a knowledge of the equipment, the equipment's maintenance requirements, and the equipment's support requirements.

The classification of support items is a task which requires a knowledge of the equipment, the equipment's maintenance requirements, and the equipment's support requirements.

The classification of support items is a task which requires a knowledge of the equipment, the equipment's maintenance requirements, and the equipment's support requirements.

The classification of support items is a task which requires a knowledge of the equipment, the equipment's maintenance requirements, and the equipment's support requirements.

The classification of support items is a task which requires a knowledge of the equipment, the equipment's maintenance requirements, and the equipment's support requirements.

The classification of support items is a task which requires a knowledge of the equipment, the equipment's maintenance requirements, and the equipment's support requirements.

The classification of support items is a task which requires a knowledge of the equipment, the equipment's maintenance requirements, and the equipment's support requirements.

The classification of support items is a task which requires a knowledge of the equipment, the equipment's maintenance requirements, and the equipment's support requirements.

	<i>Explanation</i>
ED	Support item, excluding support equipment, procured for initial issue or outfitting and stocked only for subsequent or additional initial issues or outfittings. Not subject to automatic replenishment.
EE	Support equipment procured and stocked for initial issue or outfitting to specified maintenance repair activities.
EF	Support equipment which will not be stocked but which will be centrally procured on demand.
ES	Item procured and stocked to provide for sustained support for the life of the equipment. It is applied to an item peculiar to the equipment which because of probable discontinuance or shutdown of production facilities would prove uneconomical to reproduce at a later time.
ED	An item of depot overhaul repair kit and not purchased separately. Depot kit defined as a kit that provides items required at the time of overhaul or repair.
EF	An item of a maintenance kit and not purchased separately. Maintenance kit defined as a kit that provides an item that can be replaced at organizational or direct support or general support levels of maintenance.
ED	Item included in both a depot overhaul repair kit and a maintenance kit.
MO	Item to be manufactured or fabricated at organizational level.
ME	Item to be manufactured or fabricated at first support maintenance level.
MF	Item to be manufactured or fabricated at general support maintenance level.
MD	Item to be manufactured or fabricated at depot maintenance level.
AO	Item to be assembled at organizational level.
AF	Item to be assembled at direct support maintenance level.
AF	Item to be assembled at general support maintenance level.
AD	Item to be assembled at depot maintenance level.
XX	Item is not procured or stocked because the requirements for the item will result in the replacement of the next higher assembly.

- | <i>Code</i> | <i>Explanation</i> |
|-------------|--|
| XB | Item is not procured or stocked. If not available through salvage, requisition. |
| XC | Installation drawing, diagram instruction sheet, field service drawing, that is identified by manufacturers' part number. |
| XD | Support items can be requisitioned with justification. |

NOTE

Cannibalization or salvage may be used as a source of supply for any items source coded above except those coded XA and aircraft support items as restricted by AR 700-42.

(2) Maintenance code. Maintenance codes are assigned to indicate the levels of maintenance authorized to USE and REPAIR support items. The maintenance codes are entered in the third and fourth positions of the Uniform SMR Code Format as follows:

(a) Use (third position). The maintenance code entered in the third position indicates the lowest maintenance level authorized to remove, replace, and use the support item. The maintenance code entered in the third position indicates one of the following levels of maintenance.

- | <i>Code</i> | <i>Application/Explanation</i> |
|---|---|
| O | Support item is removed, replaced, used at the organizational level of maintenance. |
| NOTE | |
| A code "C" may be used in this position to denote crew or operator maintenance performed within organizational maintenance. | |
| F | Support item is removed, replaced, used at the direct support maintenance level. |
| H | Support item is removed, replaced, used at the general support maintenance. |
| D | Support items that are removed, replaced, used at depot only. |

(b) Repair (fourth position). The maintenance code entered in the fourth position indicates whether the item is to be repaired and identifies the lowest maintenance level with the capability to perform complete repair (i.e., all authorized maintenance functions). When a maintenance code is not used a dash (-) sign is entered. For multiservice equipment/systems or when a code is entered, this position will contain one of the following maintenance codes as assigned by the service(s) that require the code:

- | <i>Code</i> | <i>A p p l i c a t i o n</i> |
|-------------|--|
| O | The lowest maintenance level capable of complete repair of the support item is the organizational level. |

- | <i>Code</i> | <i>Application/Explanation</i> |
|-------------|---|
| F | The lowest maintenance level capable of complete repair of the support item is direct support. |
| H | The lowest maintenance level capable of complete repair of the support item is general support. |
| D | The lowest maintenance level capable of complete repair of the support item is the depot level. |
| L | Repair restricted to designated Specialized Repair Activity. |
| Z | Non-repairable. No repair is authorized. |
| B | No repair is authorized. The item may be reconditioned by adjusting, lubricating, etc., at the user level. No parts or special tools are procured for the maintenance of this item. |

(3) Recoverability code. Recoverability codes are assigned to support items to indicate the disposition action on unserviceable items. The recoverability code is entered in the fifth position of the uniform SMR Code Format as follows:

- | <i>code</i> | <i>Explanation</i> |
|-------------|---|
| Z | Nonrepairable item. When unserviceable, condemn and dispose at the level indicated in the first digit of the maintenance code. |
| O | Repairable item. When uneconomically repairable, condemn and dispose at organizational level. |
| F | Repairable item. When uneconomically repairable, condemn and dispose at the direct support level. |
| H | Repairable item. When uneconomically repairable, condemn and dispose at the general support level. |
| D | Repairable item. When beyond lower level repair capability, return to depot. Condemnation and disposal not authorized below depot level. |
| L | Repairable item. Repair, condemnation, and disposal not authorized below depot/Specialized Repair Activity level. |
| A | Item requires special handling or condemnation procedures because of specific reasons (i.e., precious metal content, high dollar value, critical material or hazardous material). |

b. Federal Stock Number. Indicates the Federal stock number assigned to the item.

NOTE

For requisitioning purposes, the Federal stock number must be converted to the National stock number by adding "-00-" after the Federal stock classification (FSC) code (first four digits). For example, FSN 6625553-0142 converts to NSN 6625-00-553-0142.

c. Description. Indicates the Federal item name and a minimum description required to identify the item. The last line indicates the reference number follow@ by the applicable Federal Supply Code for Manufacturer (FSCM) in parentheses. The FSCM is used as an element in item identification to designate manufacturer or distributor or Government agency, etc., and is identified in SB 708-42.

d. Unit of Measure (U/M). Indicates the standard or basic quantity by which the listed item is used in performing the actual maintenance function. This measure is expressed by a two-character alphabetical abbreviation; e.g., ea, in, pr, etc., and is the basis used to indicate quantities and allowances in subsequent columns. When the unit of measure differs from the unit of issue, the lowest unit of issue that will satisfy the required units of measure will be requisitioned.

e. Quantity Incorporated in Unit. This column indicates the quantity of the item used in the equipment. Subsequent appearances of the same item in the same assembly are indicated by the letters "REF".

f. 15-Day Organizational Maintenance Allowance.

(1) The repair parts indicated by an asterisk in the allowance column represent those authorized for use at the organizational category, and will be requisitioned on an "as required" basis, until stockage is based on demand in accordance with AR 710-2.

(2) Major Army commanders are authorized to approve reduction in the range of support items authorized for use in units within their commands. Recommendations for increase in range of items authorized for use will be forwarded to Commander, US Army Electronics Command, ATTN: AMSEL-CRA, Fort Monmouth, NJ, 07703. **Any** changes approved will be reflected in a revision to the RPSTL.

(3) Allowance quantities are indicated in the special tools list section for special tools, TMDE, and other equipment.

g. Illustration This column is divided as follows:

(1) Figure *number*. Indicates the figure number of the illustration on which the item is shown in TM 11-6625-488-15.

(2) Item *number*. Not applicable.

1-4. Special information

a. Usable on codes are included in column 3. Uncoded items are applicable to all models. Identification of the usable on codes used in this publication are -

Code	Use on
BAR	AM-3148/USM

b. The following publication pertains to the AM-3148/USM and its components:

TM 11-6625-488-15 Operator, Organizational, Field and Depot Maintenance Manual: Preamplifier AM-3148/USM.

1-5. Location of Repair Parts

a. This manual contains one cross-reference index (sec V) to be used to locate a repair part when either the Federal stock number or reference number (manufacturer's part number) is known. The first column in the index is prepared in numerical or alphanumeric **sequence** in ascending order. The reference numbers (manufacturer's part numbers) are listed immediately following the last listed Federal stock number in the index of Federal stock numbers.

b. When the Federal stock number or reference number is known, follow the procedures given in (1) and (2) below.

(1) Refer to the index of Federal stock numbers (sec V) and locate the Federal stock number or reference number. The FSN and reference number are cross-referenced to the applicable figure and item number or reference designation.

(2) Refer to the repair parts list (sec III) and locate the figure number (col 7a) and item number or reference designation (col 7b) as noted in the FSN index.

c. When the figure and item number or reference designation are known, scrutinize columns 7a and 7b of the repair parts list (sec III) until the item is located.

d. When the FSN, reference number, figure number, item number and reference designation are not known, scrutinize column 3 of the repair parts list (sec III), which is arranged in alphabetical order.

1-6. Abbreviations

Not applicable.

1-7. Reporting of Equipment Publications

Improvements

The reporting of errors, omissions, and recommendations for improving this publication by the individual user is encouraged. Reports should be submitted on

DA Form 2028 (Recommended Changes to Publications and Blank Forms) and forwarded direct to Commander, US Army Electronics Command,

ATTN: AMSEL-MA-CRA, Fort Monmouth, NJ, 07703.

(1) SNC CODE	(2) FEDERAL STOCK NUMBER	(3) DESCRIPTION		(4) UNIT OF MEAS	(5) QTY INC ON UNIT	(6) 15-DAY ORGANIZATIONAL MAINTENANCE ALW				(7) ILLUSTRATION	
						(a)	(b)	(c)	(d)	(e)	(f)
						1-5	6-20	21-50	51-100	FIGURE NO	PLATE NO
PA02Z		ELECTRON TUBES, MATCHED W3004.....	W3004.....	PR	1	*	*	*	*	4B	
PA02Z		ELECTRON TUBES, MATCHED W3034.....	W3034.....	PR	REF	*	*	*	*	4B	
PA02Z	5960-483-8789	ELECTRON TUBES, MATCHED W3004.....	W3004.....	PR	1	*	*	*	*	4B	
PA02Z	5960-483-8789	ELECTRON TUBES, MATCHED W3004.....	W3004.....	PR	REF	*	*	*	*	4B	
PA02Z	5960-134-4012	ELECTRON TUBE W3504.....	W3504.....	EA	2	*	*	*	*	4B	
PA02Z	5960-134-6012	ELECTRON TUBE W3004.....	W3004.....	EA	REF	*	*	*	*	4B	
PA02Z	5355-685-5581	ANDB NO-REF-DESIG.....		EA	2	*	*	*	*		
PA02Z	5355-865-3991	ANDB NO-REF-DESIG.....		EA	2	*	*	*	*		
PA02Z	5355-720-5020	ANDB NO-REF-DESIG.....		EA	2	*	*	*	*		
PA02Z	5335-865-3893	ANDB NO-REF-DESIG.....		EA	1	*	*	*	*		
PA02Z	5355-865-3989	ANDB NO-REF-DESIG.....		EA	1	*	*	*	*		
PA02Z	5940-264-3004	SHIELD, ELECTRON TUBE NO-REF-DESIG.....		EA	4	*	*	*	*		

INDEX - FEDERAL STOCK NUMBER AND REFERENCE NUMBER
CROSS-REFERENCE TO FIGURE AND ITEM NUMBER

STOCK NUMBER	FIGURE NO.	ITEM NO.	STOCK NUMBER	FIGURE NO.	ITEM NO.
5355-685-5001			5960-134-6012	4B	
5355-720-5020			5960-264-3004		
5355-883-3009			5960-688-8789	4B	
5355-885-3001					
5355-885-3003					

REFERENCE NO.	MFR CODE	FIG. NO.	ITEM NO.	REFERENCE NO.	MFR CODE	FIG. NO.	ITEM NO.
157-050	00009		4B	366-042	00009		
157-051	00009		4B	366-044	00009		
19175103002	91662			366-125	00009		
366-038	00009			61894	24972		4B
366-040	00009						

By Order of the Secretary of the Army:

FRED C. WEYAND
General, United States Army
Chief of Staff

Official:

VERNE L. BOWERS
Major General, United States Army
The Adjutant General

Distribution:

To be distributed in accordance with DA Form 12-32, (qty rqr block no. 488) Organizational maintenance requirements for AN/GSG-5.

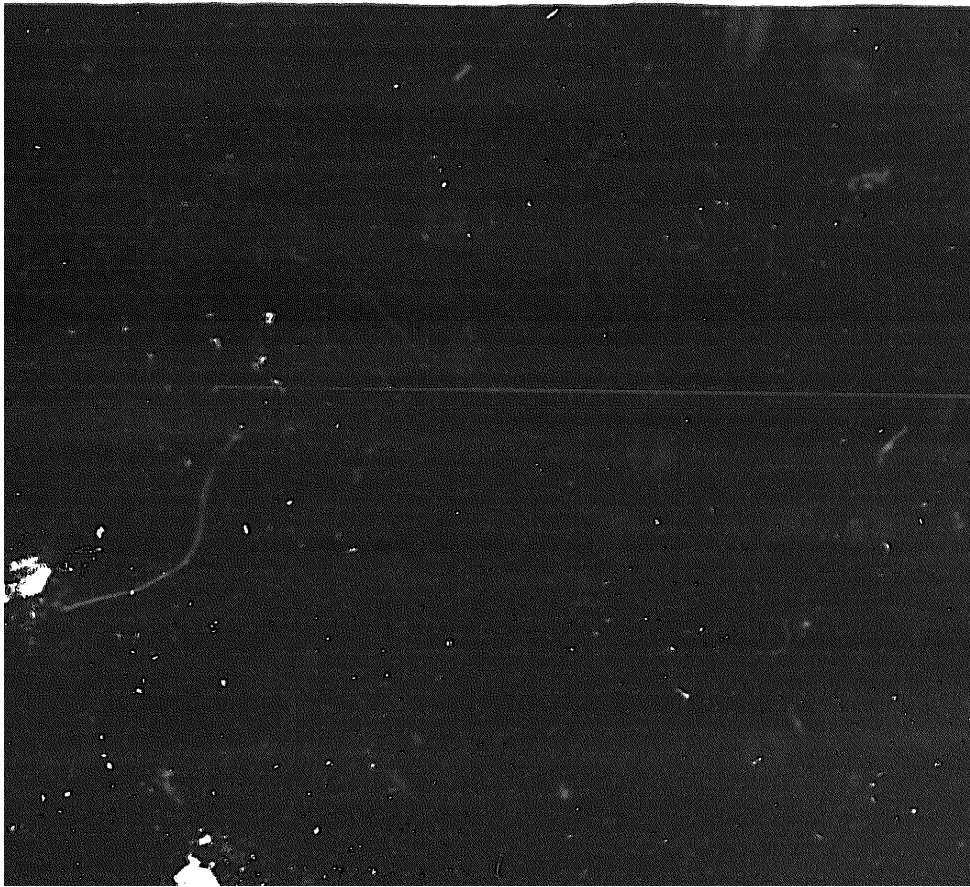
© U. S. GOVERNMENT PRINTING OFFICE: 1974-005135/322

END

01-03-83

DATE





DEPARTMENT OF THE ARMY

MICROFORM
TEST TARGET

